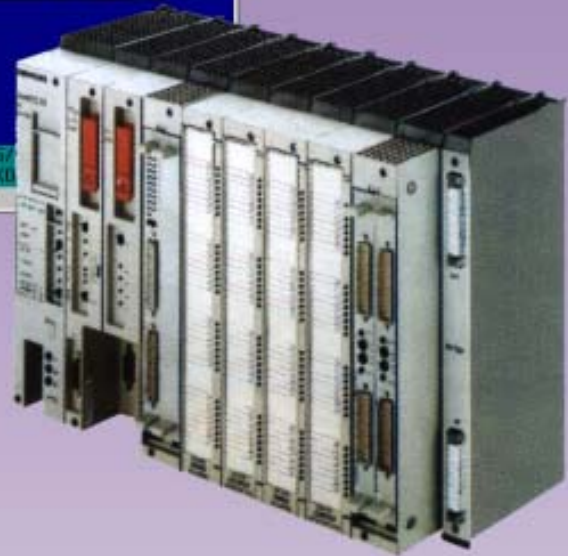
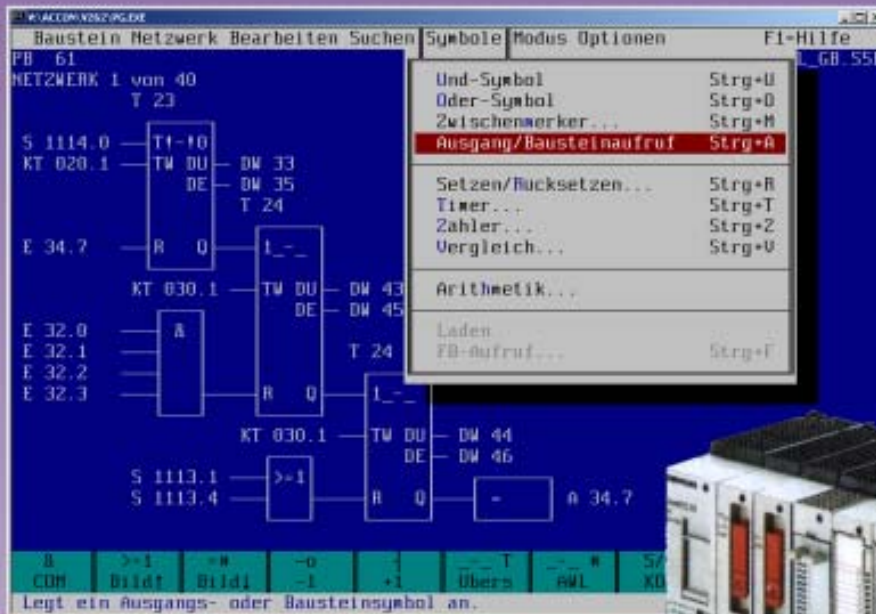


# Hard- and software for S5 Controls





---

## Preface

We thank you for your interest in our solutions around the automation engineering.

You may expect innovative and practical solutions from us in the areas of process automation, industrial communication technology and teleservice in general as well as in the environment of the S5 and S7 controls in particular.

In this catalog you find solutions for the **S5 world**.

**ACCON-PG** (page 4) is the approved S5 programming system for all controls from the AG 90 U up to the AG 155 U. Currently the version 2.60c is available. ACCON-PG is a mature and stable running 16 bit DOS software that runs in the DOS box of Win 3.11/95/98/ME/NT/2000/XP or directly under MS DOS. Therefore it is usable on old as on new PCs.

The teleservice system **ACCON-Tele-Control** (page 12) enables the worldwide programming of S5 controls via the telephone network (analog, ISDN or GSM). The supervision of the controls is also optional possible.

The toolbox **ACCON-AGLink S5** (page 14) serves for the data interchange of your developed programs with S5 controls. It is available as Win32-DLL, as Win16-DLL and as a DOS library.

The **ACCON-COM cables** (page 16) and the **ACCON-COM adapter** (page 17) are at your disposal for the connection of your S5 controls to the serial interface of your PC or your notebook computer.

As of 2004-07-20, Subject to change without notice.  
Errors excepted.  
Copyright © 1999 - 2004 by

### **DELTALOGIC** **Automatisierungstechnik GmbH**

Stuttgarter Straße 3  
73525 Schwäbisch Gmünd GERMANY  
Telefon: +49-(0)7171-916-120  
Telefax: +49-(0)7171-62676  
E-Mail: [info@deltalogic.de](mailto:info@deltalogic.de)  
Internet: <http://www.deltalogic.de>

The work on hand including all parts is copyrighted. Any use with is not within the narrow bounds of the Urheberrechtsgesetz (copyright act) is inadmissible and punishable without a written consent of Deltalogic GmbH. This applies particularly to copies, translations, microfilms and the storage and processing in electronic systems.

All prices are quoted net and EXW. VAT, postage/carriage and packing will be charged in addition. Solely our general Terms and Conditions of trade are valid.



---

## Contents

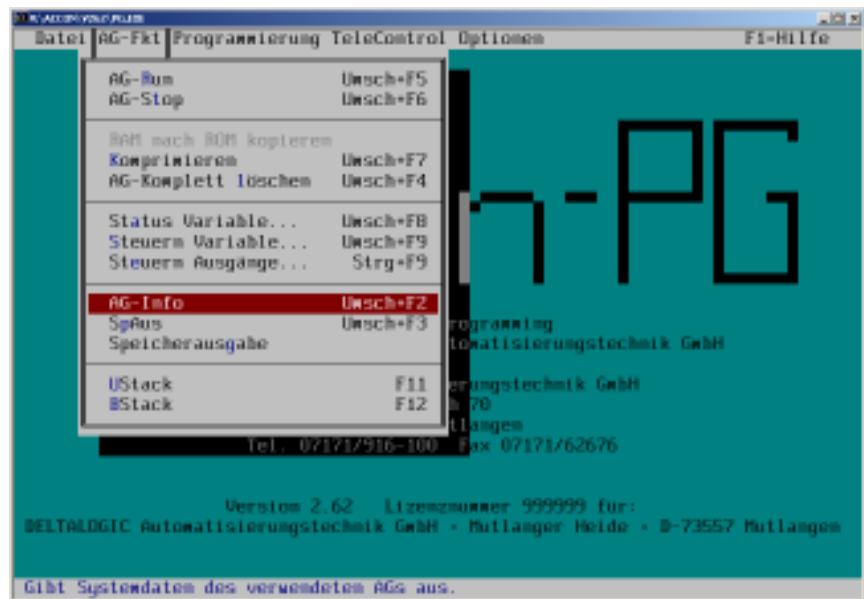
### Table of contents

S5 programming with <b>ACCON-PG 2.6</b> .....	4
COM package support with <b>ACCON-CP/IP</b> .....	9
SPS telemaintenance for S5 with <b>ACCON-TeleControl</b> .....	12
Reading and writing of S5 data directly from the PC with <b>ACCON-AGLink S5</b> .....	14
serial cable with integrated TTY converter for the S5, the <b>ACCON-COM cable</b> .....	16
DC isolated TTY converter for the S5, the <b>ACCON-COM adapter</b> .....	17
Duplicate your PU interface of your S5 with <b>ACCON-MUX</b> .....	18
Sheet for <b>request for an offer</b> .....	19

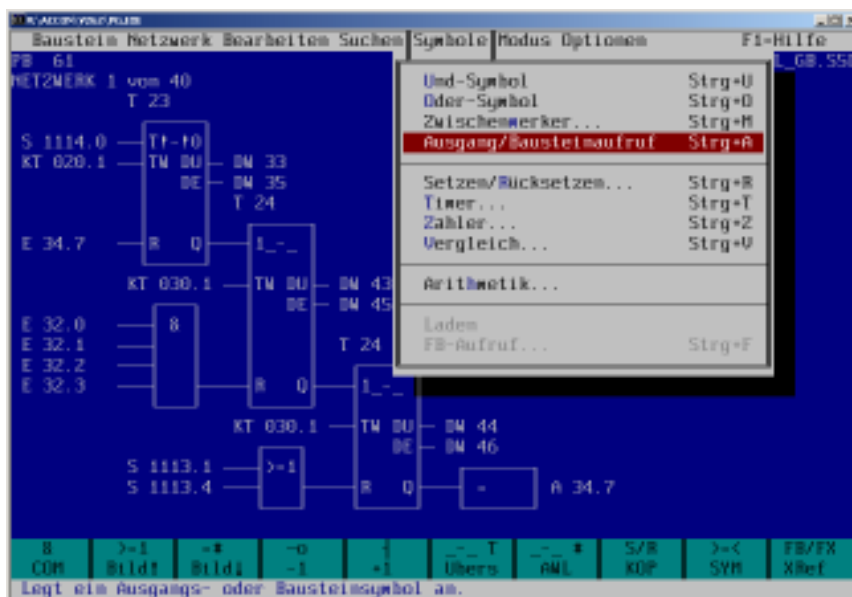
## S5 programming with ACCON-PG 2.6

### Online functions

ACCON-PG offers you all online functions as »Run«, »Stop«, »Compress«, »PLC delete«, »Status blocks«, »Status /Control variables«, »IStack«, »BStack«. All functions can be handled user friendly by menu. The online access is carried out via the serial interface (TTY converter required, e.g. ACCON-COM cable or ACCON-COM adapter.)



ACCON-PG with the online menu



### CSF

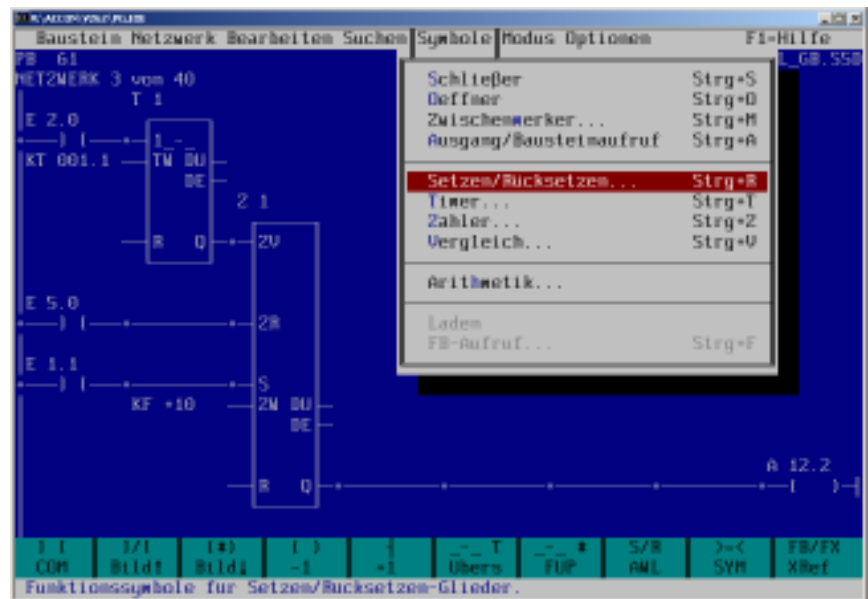
The control system flowchart programming was improved in numerous topics, e.g. more complex and greater networks are possible with ACCON-PG, unnecessary instructions (NOP 0) can be path-optimizedly and re-inserted. With ACCON-PG it is in addition possible to add an another „complex“ symbol at the lower input of a „complex“ symbol. The extended CSF programs are compatible to the S5 hardware and run on the PLCs without reservation.

ACCON-PG with control system flowchart

## S5 programming with ACCON-PG 2.6

### LAD

Similar to the control system flowchart for ACCON-PG the ladder diagram programming is also extended in numerous subjects. More complex and greater networks are possible, for example and unnecessary instructions (NOP 0) can be path-optimizedly and again re-inserted. With ACCON-PG several complex symbols per network are possible. The extended LAD programs are compatible to the S5 hardware and run on the PLCs without reservation.

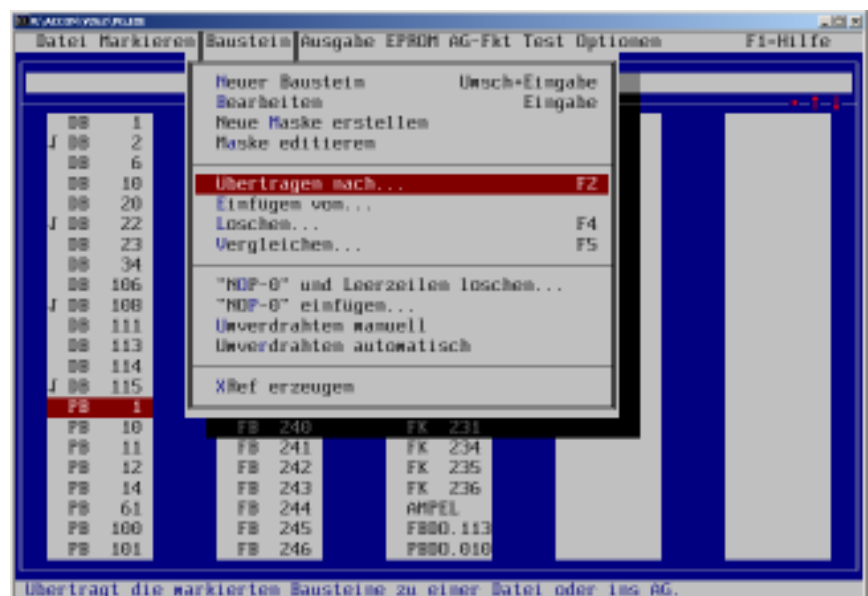


ACCON-PG  
Ladder diagram

### Directory

The directory of ACCON-PG is your efficient management center for the project administration. The rewire, the cross-reference lists, Read and Writing of the storage modules and the syntax checks are only a small selection of all possibilities.

By the way, ACCON-PG works directly with the original S5D files without having to convert. You can directly accept original S5D files and edit with ACCON-PG.



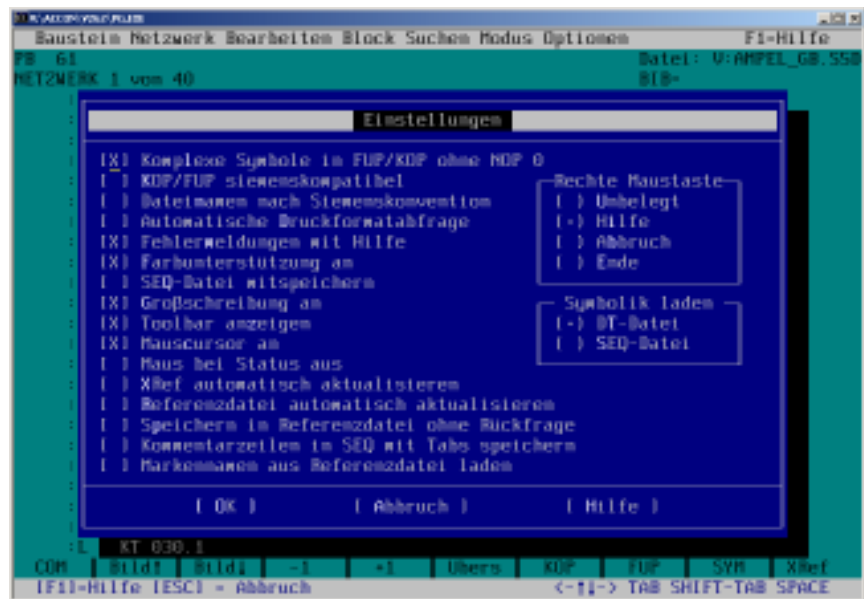
ACCON-PG with the  
directory

## S5 programming with ACCON-PG 2.6

### Flexibly configurable

You can configure ACCON-PG with numerous setting possibilities according to your selections and requirements. You can fix whether you want to use at the program representation in LAD and CSF the full performance range of ACCON-PG or whether you restrict yourself to the compatibility modus, for example. You can also turn on or turn off the tool bar on the lower screen edge.

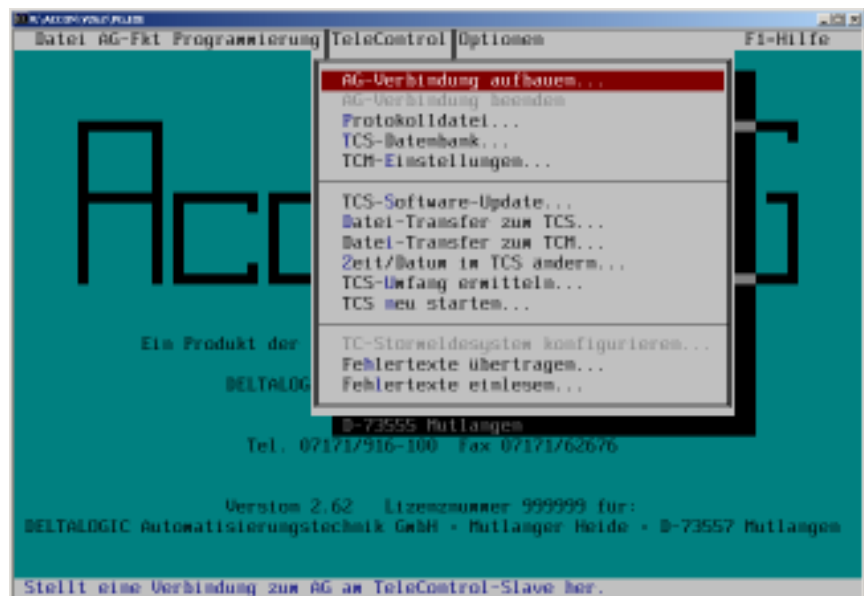
ACCON-PG with setting window



### Teleservice instead of travel

ACCON-TeleControl is the leading teleservice solution for PLC controlled plants. The worldwide diagnosis and programming of the S5 PLCs via fixed telephone network (analog or digital) or GSM mobile telephone is reliably possible. As a programming environment ACCON-PG or the original S5 software is possible. For ACCON-TeleControl a alarm reporting system that supervises the PLC permanently and that alerts the service staff is optionally available.

ACCON-PG with menu TeleControl

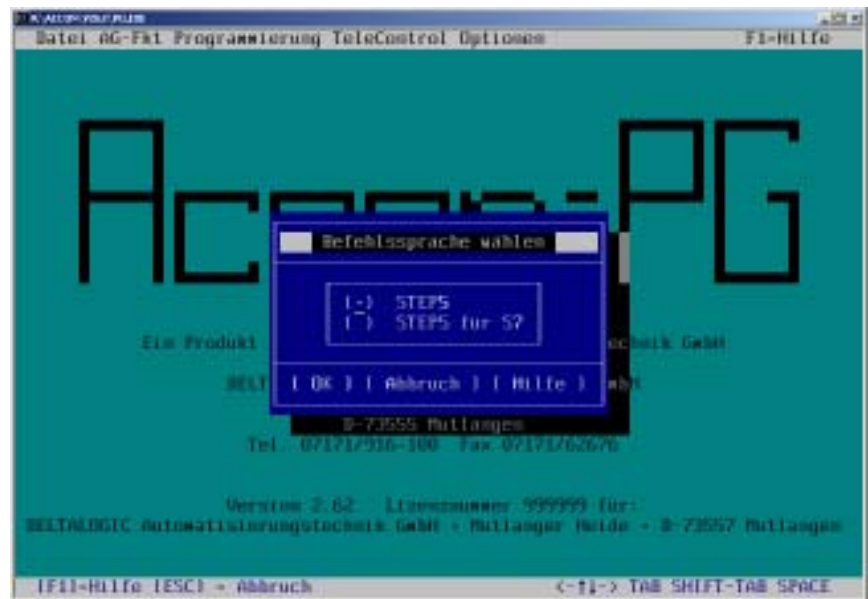


## S5 programming with ACCON-PG 2.6

### Gentle change

Programming the S7 in STEP5, no program conversion, the most „old“ STEP5 programs run on the S7 (the system change is comparable to the change of a S5 115 U to S5 135 U ). The new S7 instructions aren't contained, however.

*ACCON-PG with selection of the instruction set*



## S5 programming with ACCON-PG 2.6

## Details

### Type of product

Programming system for control applications

### Supported controls

- SIMATIC S5 90 U to S5 155 U CPU948
- SIMATIC S7 300/400 (not the complete instruction set)

### System prerequisites:

- PC with MS DOS 3.3 or higher
- RAM: 4 MB
- Hard disk: 8 MB free
- Interface for control access
- Optional: MS compatible mouse

### Program languages/editors

- STL
- CSF
- LAD

### Compliance with standards

- STEP 5 STL, LAD, CSF, file format S5D, SEQ, INI of Siemens
- SAA user interface

### Versions

- German
- English
- Spanish

### Online functionality:

- Blocks read and write
- Control run, stop, delete
- Status variables
- Status blocks, „living pictures“
- Values read and write (e.g. flags read and set)
- Other (IStack, BStack etc.)

### Interface to the control

- S5: serial cable with conversion RS232 to TTY/20 mA, e.g. ACCON-COM cable, ACCON-COM adapter (metallically isolated)
- S7 300/400: ACCON-MPI adapter or original PC adapter



### Languages/editors

- Editing commands via menu, keyboard Shortcuts or mouse+tool bar
- Context sensitive input help with button Ctrl+ F1, gives explanation of the current STL instruction, CSF-/LAD symbol or connection of an operand of a CSF-/LAD symbol
- Cross-reference list with Go-To function
- Entry of instructions and operands with an immediate check when pushing the ENTER key
- Absolute or symbolic programming

### STL

- Efficient editing with block functions
- ASCII export/-import
- Symbol and line comment can be shown at the same time (132 chars/line)
- Line comment and status information can be shown at the same time (132 chars/line)

### LAD

- Display optional Siemens compatible or improved (more complex and greater networks can be displayed, path-optimizing and re-inserting of unnecessary instructions)
- E.g. more than one „complex“ symbol (timer, counter etc.) per network
- Very efficient, object oriented mouse or keyboard operation

### CSF

- Display optional Siemens compatible or improved (more complex and greater networks can be displayed, path-optimizing and re-inserting of unnecessary instructions)
- E.g. „complex“ symbol at the lower input of a „complex“ symbol
- Very efficient, object oriented mouse or keyboard operation

### Other features

- Simple copying of program parts (lines, blocks, networks, data blocks within and between networks, data blocks and projects)
- Starting and ending of status blocks with a keystroke during editing
- Instructions and operands check depending of the target control during the input or as a separate test run
- Mask DB editor (DB1, DX0)
- Convenient project administration (copying blocks between projects)
- Import and export of ASCII-STL files
- Merging of symbol files
- Dialog or file controlled rewire
- Documentation functions like QVL, input/output flag reference list, program structure etc..
- Selective status block function (status is shown only then when the block is called in a certain call sequence)
- Because of the downward compatibility to the Siemens-programming software even working simultaneously with ACCON-PG on the same project is possible

- Programming via H1 bus, L2 bus and ARCNET
- Programming the S7 in STEP5, no program conversion, the most „old“ STEP5 programs run on the S7 (the system change is comparable to the change of a S5 115 U to S5 135 U ). The new S7 instructions aren't contained, however.

### Options

- Programming and maintenance via modem and telephone network (analog, digital, mobile telephone) with optional intelligence on the spot (automatic notification at failure)
- Support of the following EPROMs:
  - ACCON-EPROMs
  - Siemens-PU EPROMs of PG 720, 730, 740, 750 760, 770 or external (serial and parallel)
  - Write redirection of the file at the EPROM (by which non-compatible COM packages and EPROM types can cooperate)

- Call of CP/IP-parameterization software (COM package) without Siemens-Dongle



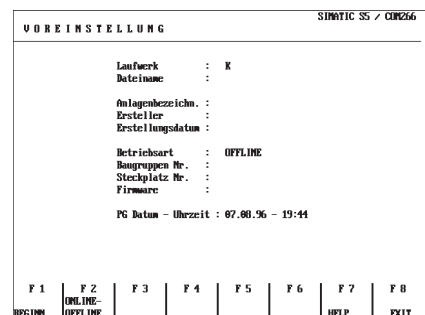
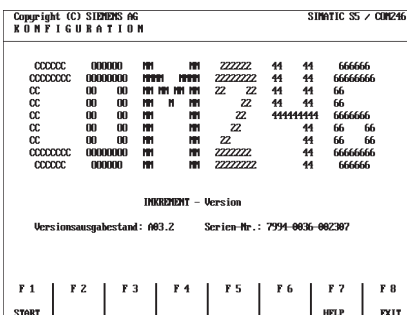
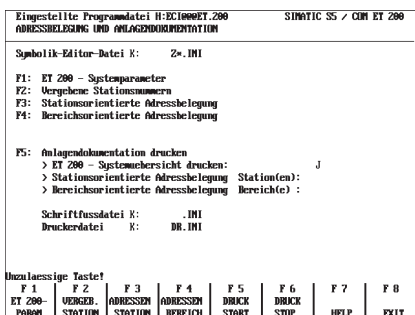
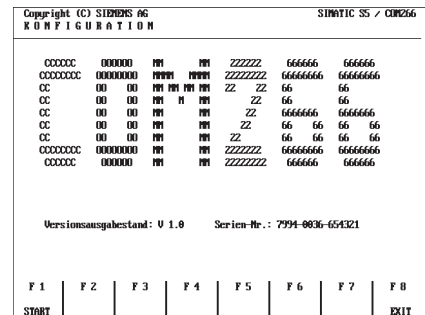
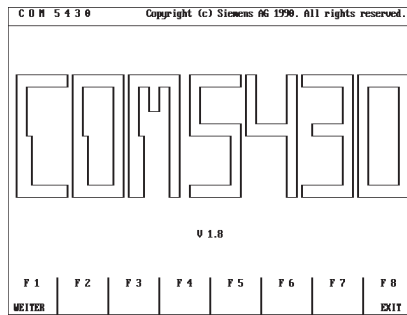
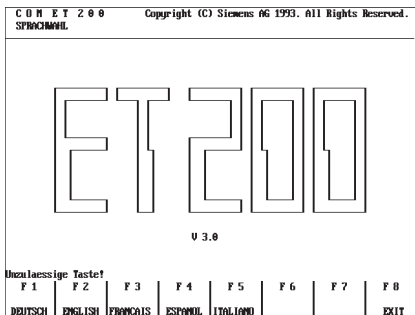
The so-called COM packages are the drivers and parameterization programs that are needed for or the configuration of the CP/IP periphery of the Siemens-S5 PLCs. Since they need functions from the ancient operating system CP/M, they run only with a corresponding emulation software.

ACCON-CP/IP is a CP/M emulator with integrated instruction interpreter (Komi) so that the COM packages are operational without original CP/M emulator and original Komi. ACCON-CP/IP is an extension of the programming system ACCON-PG.

With ACCON-PG you can work with the COM packages without leaving the

program. It is unimportant whether you work with a notebook computer, a laptop computer or a desktop PC, ACCON-PG with ACCON-CP/IP runs on PCs with 80286 processors upwards. Admittedly on a 486s or pentium PC makes the work considerably more enjoyable.

This solution is with provision for extension and also works when a new version of a COM package is published. For the processing of the COM packages ACCON-CP/IP need some files of the Siemens programming software, exact the PU version step 5 version 3.2. These are the files with the ending ».CMD«, with the names starting with »S5WX«.



The following COM packages were tested and released successfully with ACCON-CP/IP. Packages that are not listed on enquiry. The WX drivers of the PU variant of step V version 3.2 were used with the file date 24.04.92.

FORMAT COMPILE PACKAGE >>> COM530 <<< ..... S5PDC00X.CMD  
 COM REG ..... S5PDC03X.CMD  
 COM PMC ..... S5PDC04X.CMD  
 COM 525 ..... V 4.3 S5PDC05X.CMD  
 COM 525 programming package for CP525/524 ... S5PDC05X.CMD  
 FORMAT COMPILE PACKAGE >>> COM396 <<< ..... S5PDC07X.CMD  
 COM246 position control module IP246 .... V03.2 S5PDC09X.CMD  
 COM247 Position control module IP247 .... V02.0 S5PDC10X.CMD  
 COM 260 controller module IP260 ..... V2.0 S5PDC11X.CMD  
 COM 266 position cntrol module IP266 ..... S5PDC13X.CMD  
 COM 115F CONFIGURATION ..... S5PDC15X.CMD  
 COM 115F DOCUMENTATION ..... S5PDD15X.CMD  
 COM GRAPH ..... (CP526/527/528 OP30A/30B) S5PDC70X.CMD  
 COM B+B GRAPH ..... (CP526/527/528) S5PDC70X.CMD  
 PROM 525 ..... V 4.2 S5PDP05X.CMD  
 PROM 525 EPROM programming CP525/524 ..... S5PDP05X.CMD  
 PROM 526 EPROM programming CP 526 ..... S5PDP06X.CMD  
 PROM 527 EPROM programming CP 527 ..... S5PDP70X.CMD  
 COM ET 200 ..... V 2.0 S5PX200X.CMD  
 COM ET 200 ..... V 3.0 S5PX200X.CMD  
 COM ET 200 ..... V 4.0 S5PX200X.CMD  
 COM ET 200 ..... V 4.1 S5PX200X.CMD  
 COM ET 100 ..... S5PX308X.CMD  
 COM 530 ..... V 2.2 S5PXC00X.CMD  
 COM 143 ..... V 1.1 S5PXC19X.CMD  
 COM 95F ..... V 1.0 S5PXC23X.CMD  
 COM DB1 ..... V 1.1 S5PXCDBX.CMD  
 COM TEXT ..... V 3.00 S5PXC24X.CMD  
 COM TEXT ..... (TD10/20 OP20) S5PXC24X.CMD

CONVERT ..... V 2.1 S5PXC0NX.CMD  
 COM PP ..... V 3.0 S5PXC0PPX.CMD  
 STF DB EDITOR ..... V 1.1 S5PXD19X.CMD  
 LAD, CSF, STL ..... V 3.0 S5PXS01X.CMD  
 LAD, CSF, STL, GRAPH 5 ..... V 3.0 S5PXS02X.CMD  
 CROSS REFERENCE LIST, COMPARISON, REWIRE .. V 3.0 S5PXS03X.CMD  
 EPROM/EEPROM ..... V 3.1 S5PXS04X.CMD  
 PU CONNECTION ..... V 3.0 S5PXS05X.CMD  
 COMFORTABLE DOCUMENTATION, V2.0 ..... S5PXS06X.CMD  
 SYMBOLIC EDITOR ..... V 3.0 S5PXS08X.CMD  
 COM 5430 ..... S5PDC53X.CMD  
 SINEC NCM ..... V 5.01 S5PXC5HX.CMD

= Init Editieren Netz Laden Test Werkzeuge		SINEC CP 5430 TP																
<table border="1"> <tr> <td>CP Init</td> <td></td> </tr> <tr> <td>Uhr Init</td> <td></td> </tr> <tr> <td>Netzparameter - global</td> <td></td> </tr> <tr> <td>Netzparameter - lokal</td> <td></td> </tr> <tr> <td>Verbindungen</td> <td>&gt;</td> </tr> <tr> <td>UHD Variablen Editor</td> <td>&gt;</td> </tr> <tr> <td>Peripherie</td> <td>&gt;</td> </tr> <tr> <td>Dokumentation</td> <td>&gt;</td> </tr> </table>			CP Init		Uhr Init		Netzparameter - global		Netzparameter - lokal		Verbindungen	>	UHD Variablen Editor	>	Peripherie	>	Dokumentation	>
CP Init																		
Uhr Init																		
Netzparameter - global																		
Netzparameter - lokal																		
Verbindungen	>																	
UHD Variablen Editor	>																	
Peripherie	>																	
Dokumentation	>																	
Kommunikationsprozessor initialisieren																		

code	description
910950-DOS-UK*	<b>ACCON PG STL-LAD-CSF English</b> Efficient STL editor, export and import of files in ASCII format, uses S5D and SEQ files directly, help functions with detailed information, screen form DB editor, selection of a path. Efficient LAD and CSF editor. ACCON PG runs with DOS or in the DOS box of WIN 3.11/95/98/ME/NT/2000 and XP including online communication with S5 controls. With WIN 2000 and XP currently the communication with ACCON EPROMs, Siemens EPROMs and with S7 controls is NOT guaranteed. A printed manual is not included, can be ordered separately.
910951-DOS-UK*	<b>ACCON PG STL-LAD-CSF English S-Upgrade2</b> Upgrade from ACCON PG STL license version 2.11 or previous to version 2.62 (scope of delivery see code 910950-DOS-UK), delivery via e-mail.
910954-DOS-UK*	<b>ACCON PG STL-LAD-CSF English S-Upgrade</b> Upgrade from ACCON PG STL license version 2.5x/2.60 to version 2.62 (scope of delivery see code 910950-DOS-UK), delivery via e-mail.
910952-DOS-UK*	<b>ACCON PG STL-LAD-CSF English SL-/SC-Upgrade2</b> Upgrade either from ACCON PG STL-LAD or from STL-CSF version 2.11 or previous to version 2.62 (scope of delivery see code 910950-DOS-UK), delivery via e-mail.
910955-DOS-UK*	<b>ACCON PG STL-LAD-CSF English SL-/SC-Upgrade</b> Upgrade either from ACCON PG STL-LAD or from STL-CSF version 2.5x/2.60 to version 2.62 (scope of delivery see code 910950-DOS-UK), delivery via e-mail.
910953-DOS-UK*	<b>ACCON PG STL-LAD-CSF English SLC-Update2</b> Update from ACCON PG STL-LAD-CSF version 2.11 or previous to version 2.62 (scope of delivery see code 910950-DOS-UK), delivery via e-mail.
910956-DOS-UK*	<b>ACCON PG STL-LAD-CSF English SLC-Update</b> Update from ACCON PG STL-LAD-CSF version 2.5x/2.60 to version 2.62 (scope of delivery see code 910950-DOS-UK), delivery via e-mail.
810950-DOS-UK*	<b>ACCON PG STL-LAD-CSF license for education English</b> Education version of ACCON PG with the programming languages STL, LAD and CSF, classroom license, Installation on all training computers permitted, only for education, not for commercial programming. A printed manual can be ordered separately.
810953-DOS-UK*	<b>ACCON PG STL-LAD-CSF education license Update2</b> English, Upgrade from ACCON PG STL-LAD-CSF education license version 2.11 or previous to version 2.62 (scope of delivery see code 910950-DOS-UK), delivery via e-mail.
810956-DOS-UK*	<b>ACCON PG STL-LAD-CSF license for education Update</b> English, Upgrade from ACCON PG STL-LAD-CSF education license version 2.5x/2.60 to version 2.62 (scope of delivery see code 910950-DOS-UK), delivery via e-mail.
910001-DOS-UK	<b>ACCON PG V2.5 manual, English</b> Printed manual on ACCON PG (STL, LAD, CSF) in a DIN A5 ring binder.
999995	<b>Flat rate for creation of data medium</b> Delivery of updates on data medium (floppy disk or CD-ROM) instead of delivery via e-mail.
*D = german version, UK = english version, E = spanish version	